



# Compatibility

## 10-bit Display Method with Adobe Photoshop CS5 and Graphics Board Compatibility

**Applicable Monitors:** ColorEdge CG303W, CG301W, CG275W, CG245W, CG243W, CG223W, SX2762W, SX2462W, SX2262W

This document explains the method for displaying 10-bit color on Windows 7 / Vista / XP using Photoshop CS5 and AMD (ATI) graphics boards that support 10-bit display (FirePro / FireGL), as well as compatibility information.

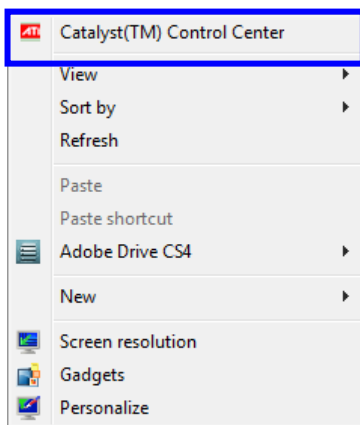
### 1. 10-bit display method on Photoshop CS5

#### 1.1 Setting up graphics driver

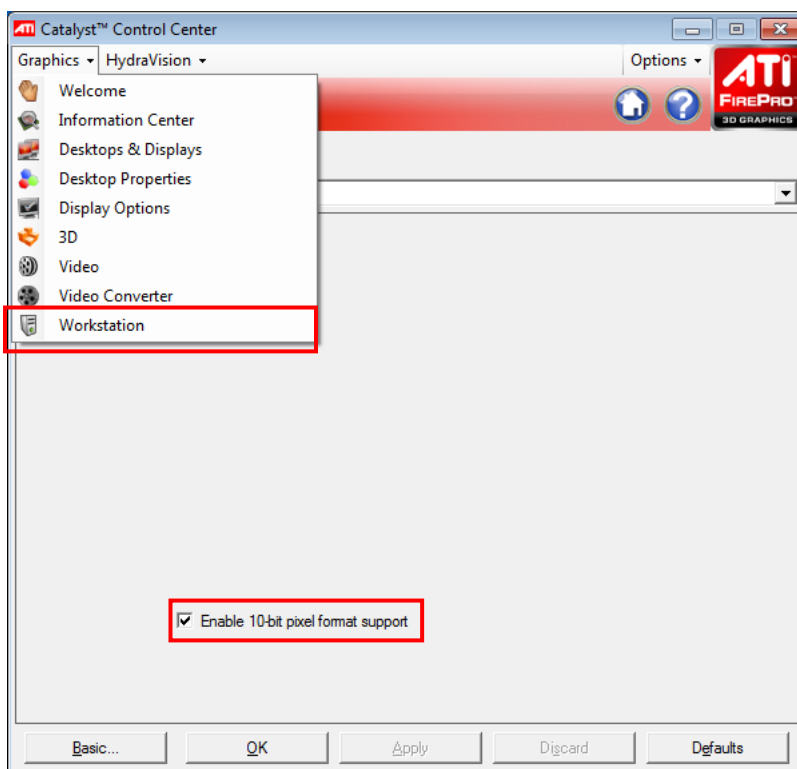
(1) Install a driver that supports 10-bit display (Ver.8.743.3 or later).

(Driver download site: <http://support.amd.com/us/Pages/AMDSupportHub.aspx>)

(2) Right-click on the desktop and choose [Catalyst Control Center].



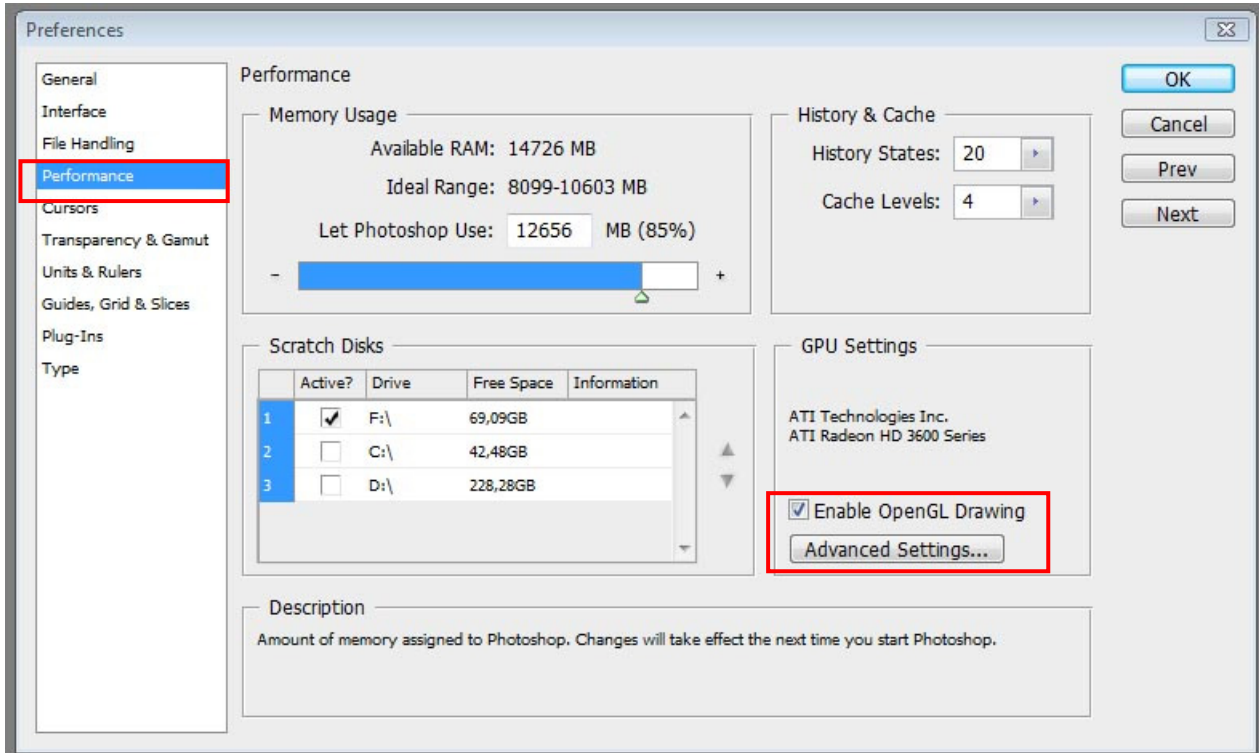
(3) Choose [Graphics Settings] - [Workstation] and check [Enable 10-bit pixel format support] checkbox.



\* AMD (ATI) Radeon graphics boards do not support 10-bit display because there is no [Workstation] settings.

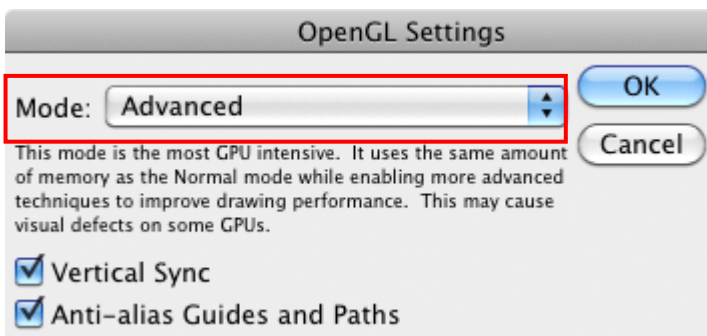
## 1.2 Configuring Photoshop CS5

(1) In [Preference] - [Photoshop] menu of Photoshop CS5, choose [Performance], check [Enable OpenGL Drawing] checkbox, and click [Advanced] button in “GPU settings”.



(2) OpenGL Settings menu opens. Choose [Normal] or [Advanced] in Mode.

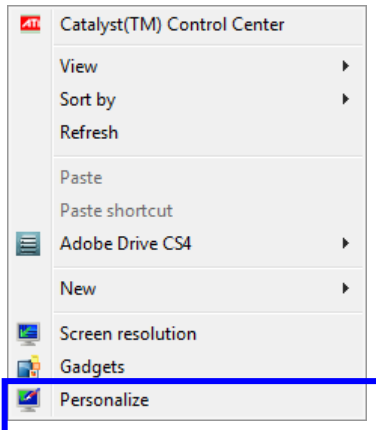
\* 512 MB graphics memory is necessary to change OpenGL modes on Windows XP.



### 1.3 Configuring Windows

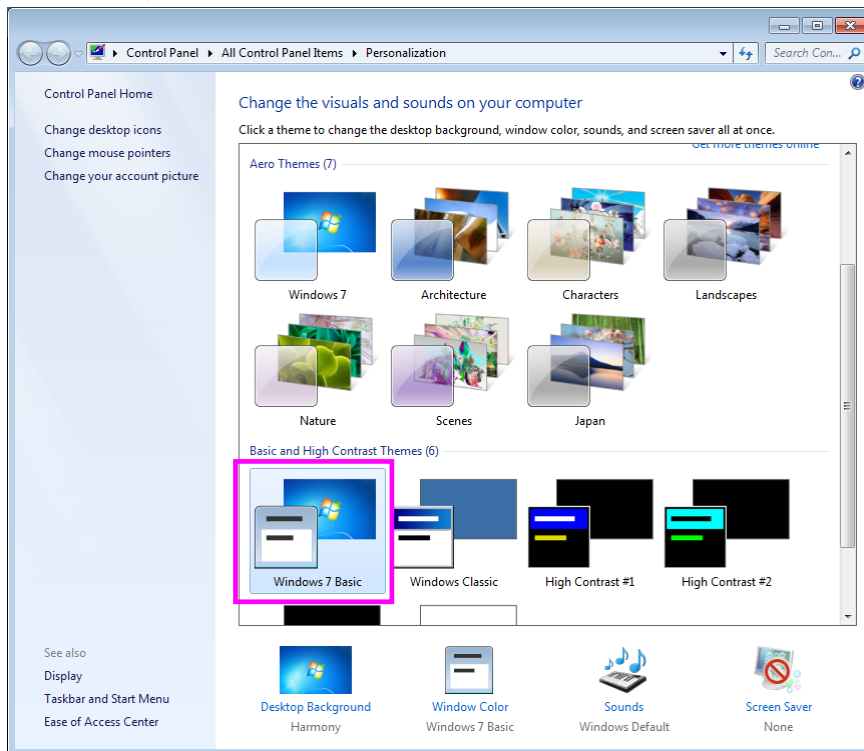
It is necessary to turn off Windows Aero function to display 10-bit color on Windows 7 or Vista.

(1) Right-click on the desktop and choose [Personalize].



(2) Choose a theme other than an Aero theme.

\*For example, Windows 7 Basic.



## Compatibility information

We have confirmed that 10-bit display is available with the following combinations of the monitors and graphics boards.

### <Monitors>

CG303W (SingleLink/10bit)  
 CG301W (SingleLink/10bit)  
 CG275W (DisplayPort/10bit, SingleLink/10bit)  
 CG245W (DisplayPort/10bit)  
 CG243W (DisplayPort/10bit)  
 CG223W (DisplayPort/10bit)  
 SX2762W (DisplayPort/10bit, SingleLink/10bit)  
 SX2462W (DisplayPort/10bit)  
 SX2262W (DisplayPort/10bit)

### <Graphics boards>

FirePro V8800, V8750, V8700, V7800, V5800, V4800, V3800, V3750  
 FireGL V5600, V3600

\* As of January 2011, NVIDIA's graphics board are not compatible.

### Adobe Photoshop CS5 – 10-bit Display Compatibility List

	Connection	FirePro			FireGL	
		V8800	V8750 V8700 V7800 V5800 V4800 V3800	V3750	V5600	V3600
<b>CG245W</b>	DisplayPort	Yes	Yes	Yes <sup>2</sup>	-	-
<b>CG223W</b>		Yes	Yes	Yes <sup>2</sup>	-	-
<b>CG301W</b> (SingleLink/10bit)	DualLink DVI	-	Yes <sup>1</sup>	Yes <sup>1,2</sup>	Yes	Yes <sup>2</sup>

<sup>1</sup> Connection via DisplayPort-DVI conversion adapter is not supported.

<sup>2</sup> Windows XP is not supported.